

# St.Regis Academy

Summer 2019 Furniture

Summer 2019

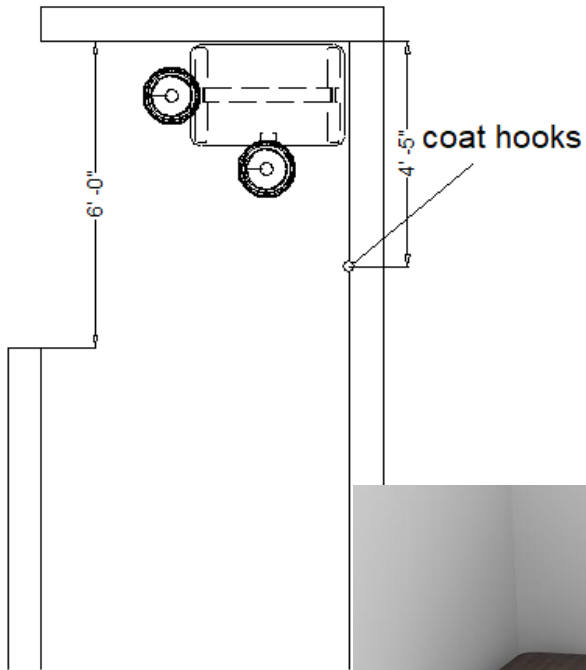
Sales | Katy Sullivan  
Design | Elise Walker



**SCOTT RICE**  
◦OFFICE WORKS◦

## 01 | Kindergarten Nook

Smith System | VS



### FINISHES



Laminate  
Smith System  
Asian Night  
Table top



Plastic  
Smith System  
Charcoal  
4MM T-mold  
edge band



Paint  
Smith System  
Black  
Table base



Plastic  
VS  
Dark Red C027  
Hokki stools

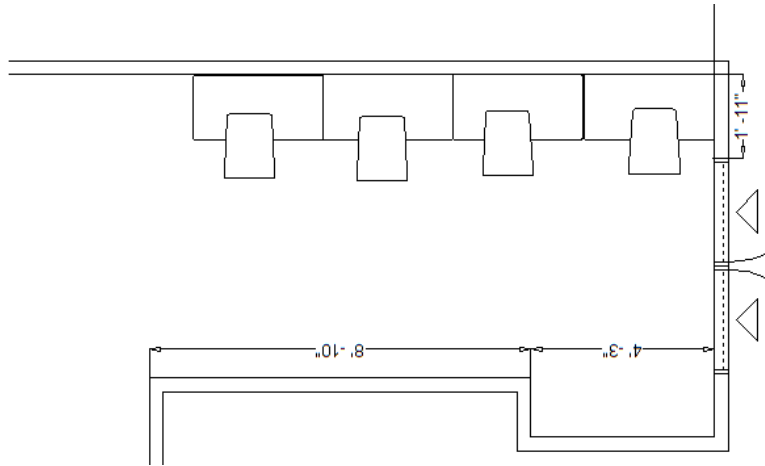
### DETAILS

- (1) 24"x36" Interchange Activity table
  - Low range insert so table can be set at 24"h
  - 4MM t-mold edge band
- (2) Height adjustable Hokki stools
  - Range: 15"-19 ¾"h

*Finishes shown may vary from different screens and printers*

## 02 | 2<sup>nd</sup> – 4<sup>th</sup> Grade Hallway

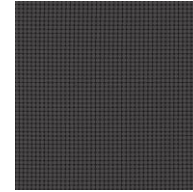
### Steelcase



### FINISHES



Upholstery  
Big Dot  
Cinnamon  
3525-301  
Alight Bench



Upholstery  
Big Dot  
Graphite  
3525-804  
Alight Bench



Laminate  
Storm Wenge  
2HSW  
Personal Table

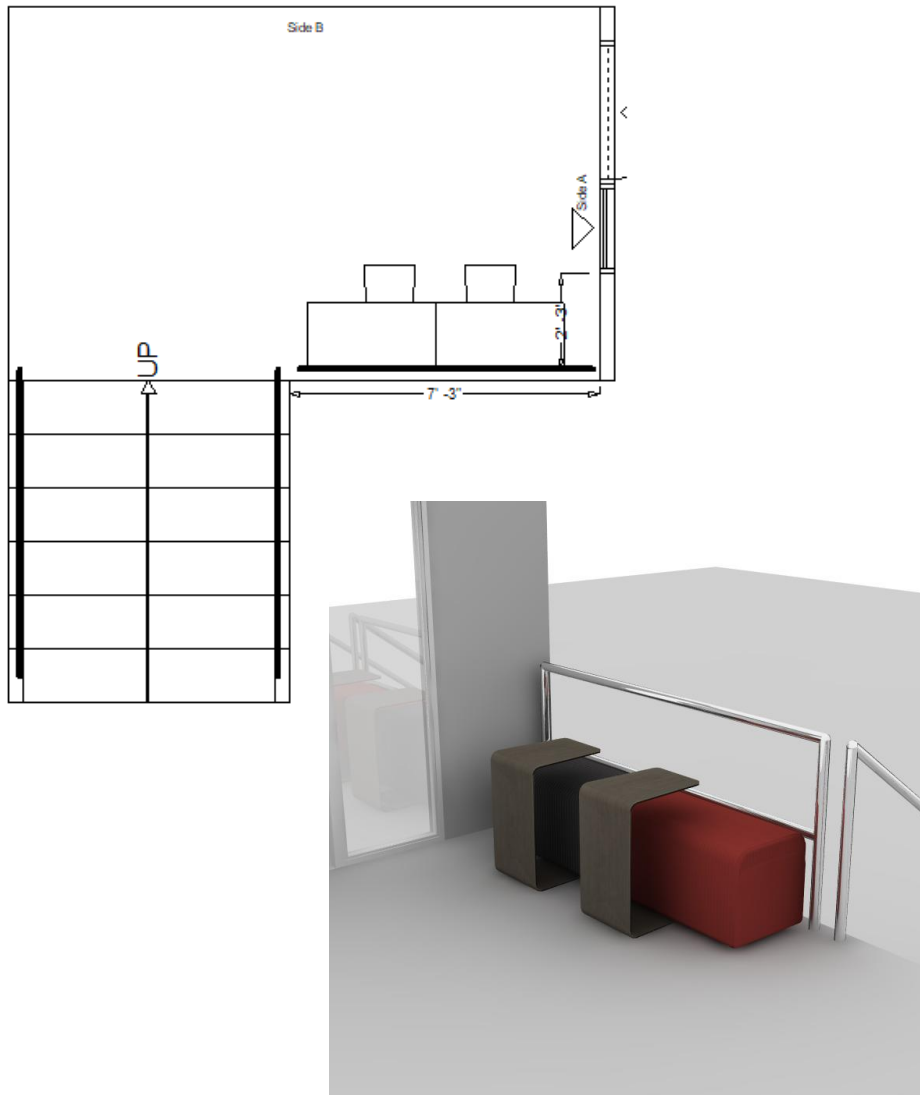
### DETAILS

- (4) Alight Bench
  - Low profile glides
  - (2) of each color fabric
- (4) Campfire Personal tables

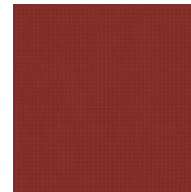
*Finishes shown may vary from different screens and printers*

## 03 | 6<sup>th</sup>-8<sup>th</sup> grade Hallway

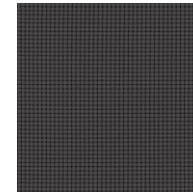
### Steelcase



#### FINISHES



Upholstery  
Big Dot  
Cinnamon  
3525-301  
Alight Bench



Upholstery  
Big Dot  
Graphite  
3525-804  
Alight Bench



Laminate  
Storm Wenge  
2HSW  
Personal Table

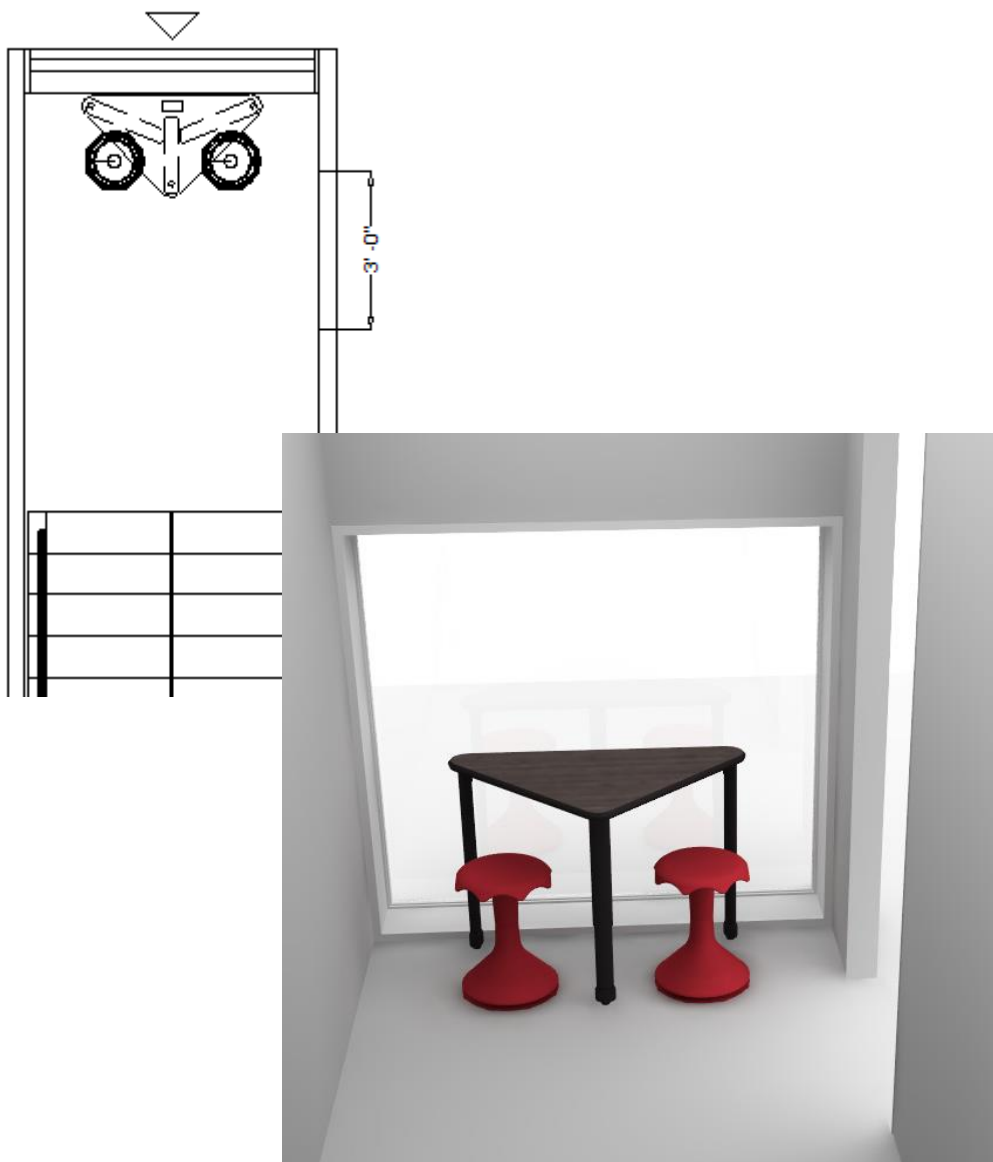
#### DETAILS

- (2) Alight Bench
  - Low profile glides
  - (1) of each color fabric
- (2) Campfire Personal tables

*Finishes shown may vary from different screens and printers*

## 04 | Logic School Nook

Smith System | VS



### FINISHES



Laminate  
Smith System  
Asian Night  
Table top



Plastic  
Smith System  
Charcoal  
4MM T-mold  
edge band



Paint  
Smith System  
Black  
Table base



Plastic  
VS  
Dark Red C027  
Hokki stools

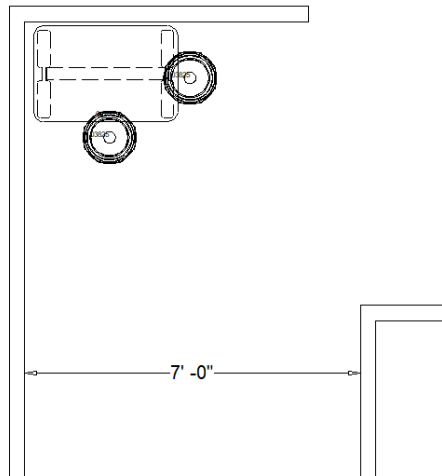
### DETAILS

- (1) Interchange Wing Table
  - 4MM t-mold edge band
- (2) Height adjustable Hokki stools
  - Range: 15"-19 ¾"h

*Finishes shown may vary from different screens and printers*

## 05 | 3<sup>rd</sup>- 8<sup>th</sup> grade Nook

### Smith System | VS



#### FINISHES



Laminate  
Smith System  
Asian Night  
Table top



Plastic  
Smith System  
Charcoal  
4MM T-mold  
edge band



Paint  
Smith System  
Black  
Table base



Plastic  
VS  
Dark Red C027  
Hokki stools

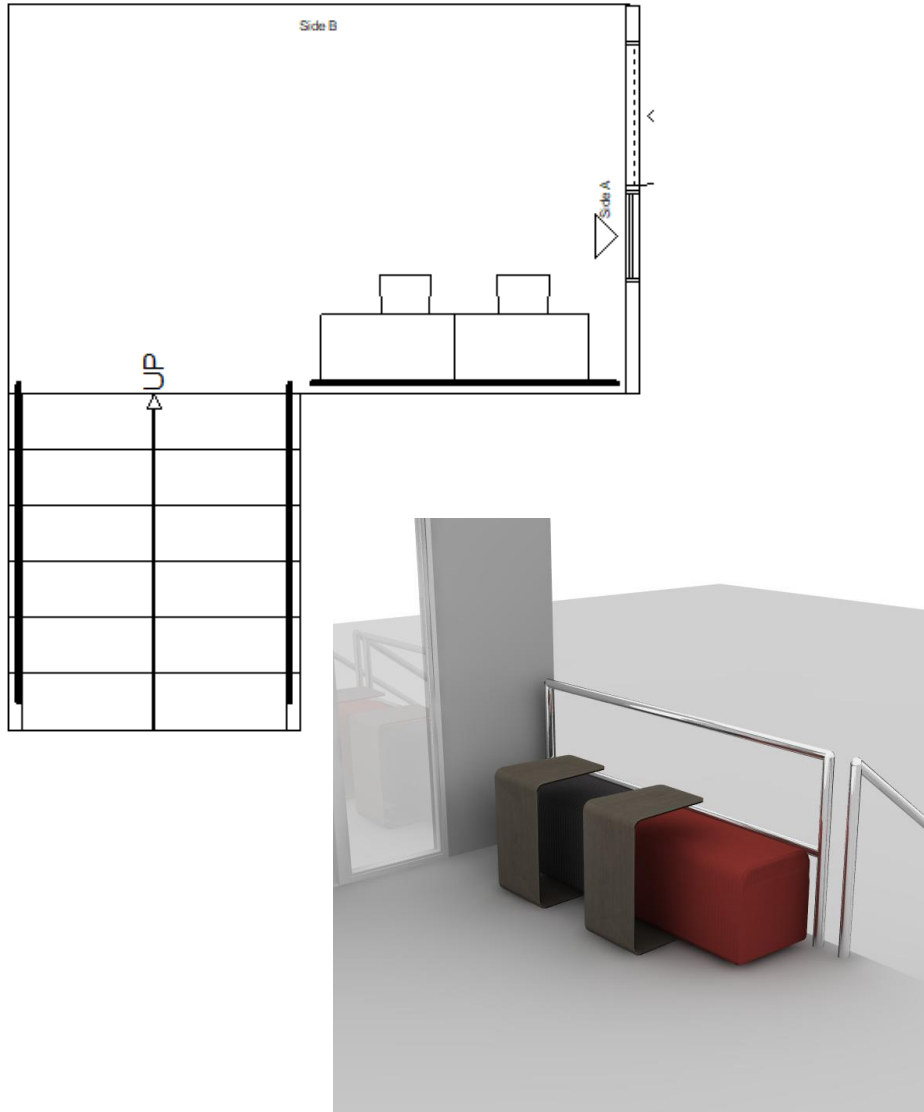
#### DETAILS

- (1) 24"x36" Interchange Activity table
  - Low range insert so table can be set at 24"h
  - 4MM t-mold edge band
- (2) Height adjustable Hokki stools
  - Range: 15"-19 ¾"h

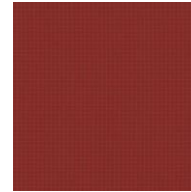
*Finishes shown may vary from different screens and printers*

## 06 | 5<sup>th</sup>-9<sup>th</sup> grade Hallway

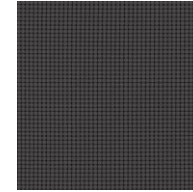
### Steelcase



#### FINISHES



Upholstery  
Big Dot  
Cinnamon  
3525-301  
Alight Bench



Upholstery  
Big Dot  
Graphite  
3525-804  
Alight Bench



Laminate  
Storm Wenge  
2HSW  
Personal Table

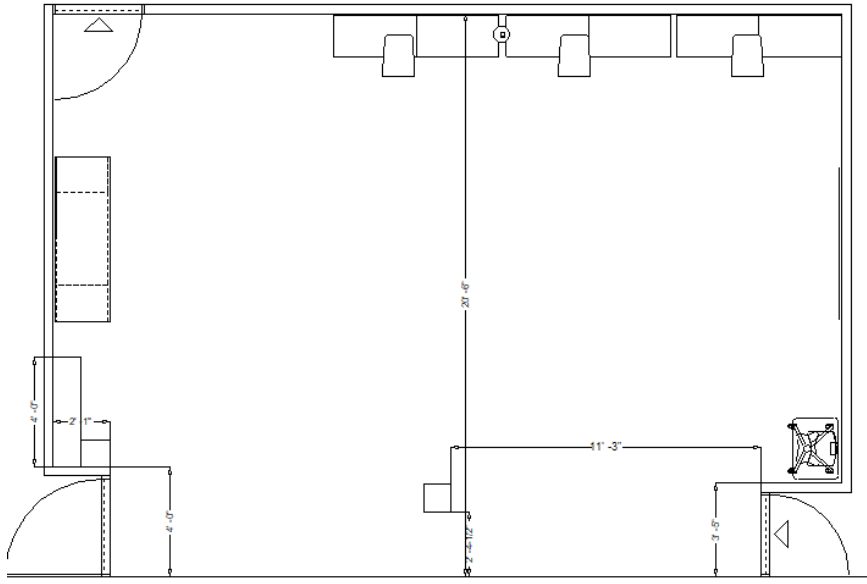
#### DETAILS

- (2) Alight Bench
  - Low profile glides
  - (1) of each color fabric
- (2) Campfire Personal tables

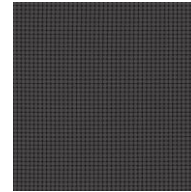
*Finishes shown may vary from different screens and printers*

## 07 | Teacher workroom

### Steelcase



### FINISHES



Upholstery  
Big Dot  
Graphite  
3525-804  
Alight Bench



Paint  
Platinum Metallic  
4799  
Thread post



Laminate  
Storm Wenge  
2HSW  
Personal Table



Laminate  
Smith System  
Asian Night  
Sit/Stand top



Plastic  
Smith System  
Charcoal  
4MM T-mold  
edge band



Paint  
Smith System  
Black  
Sit/Stand base

*Finishes shown may vary from different screens and printers*

### DETAILS

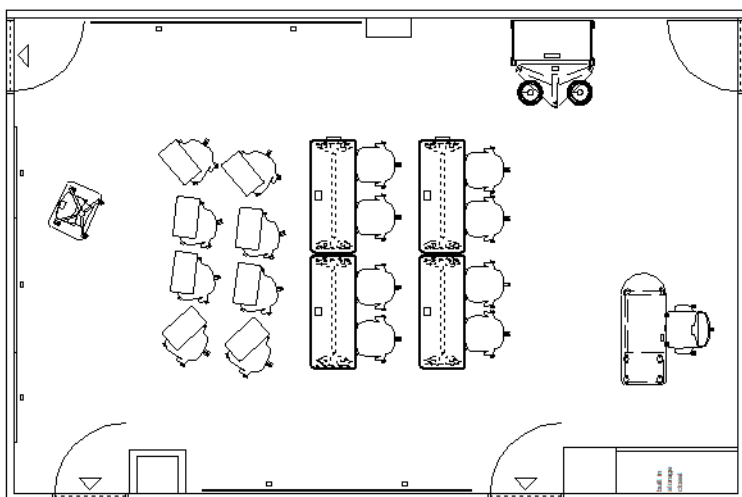
- (6) Alight Bench
  - Low profile glides
- (3) Campfire Personal tables
- (1) 30" h Thread post for power
  - 5' cord
  - 6 NEMA outlets
- (1) UXL Sit/Stand Mobile Desk
  - 20" x 27"





## 08 | Math Lab

Steelcase | Smith System | VS | Claridge



### FINISHES



Laminate  
Smith System  
Asian Night  
Smith System  
worksurface



Plastic  
Smith System  
Charcoal  
4MM T-mold  
edge band



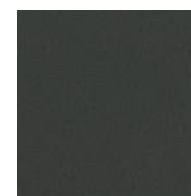
Paint  
Smith System  
Black  
Table base



Plastic  
VS  
Dark Red C027  
Hokki stools



Laminate  
Storm Wenge  
2HSW  
Verb table top



Paint  
Merle  
7360  
Verb legs

### DETAILS

- (4) 24"x60" Verb rectangle tables
  - Side/center docks for whiteboards
  - Access legs + locking casters
  - (8) personal whiteboards
- (8) Mid-back node chair w/ 5-star base
- (8) Mid-back node w/ tablet arm and tripod base
- (1) Novo task chair
  - Mid-back
  - Height adjustable arms
  - Carpet / Hard floor casters
- (1) Cascade single BBF Bullet teachers desk
  - 20" x 27"
- (1) Interchange Wing Desk
- (1) Double sided whiteboard w/ 3" totes
  - (2) Height adjustable Hokki stools
  - Range: 15"-19 3/4"

#### Markerboards:

- (1) 14"w x 48"h Ceramisteeel markerboard w/ 48" graph paper print and tray + marker/cloth
- (2) 12" x 48"h Cermisteeel markerboards w/ tray + marker/cloth

*Finishes shown may vary from different screens and printers*

## 08 | Math Lab – continued (finishes)

Steelcase | Smith System | Sit On It



**UXL | Sit/Stand mobile desk**

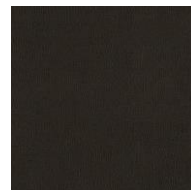
### FINISHES



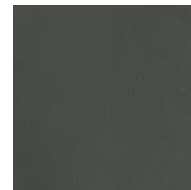
Mesh  
Onyx solid mesh  
Novo mesh back



Plastic  
Black  
Novo chair frame  
and lumbar



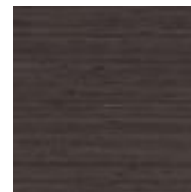
Upholstery  
Sit On It  
Element  
Onyx  
Novo Seat



Plastic  
Midnight 6259  
Node chair shell  
and personal  
service



Plastic  
Black 6205  
Node chair base



Laminate  
Smith System  
Asian Night  
Sit/Stand top

### DETAILS



Plastic  
Smith System  
Charcoal  
4MM T-mold  
edge band

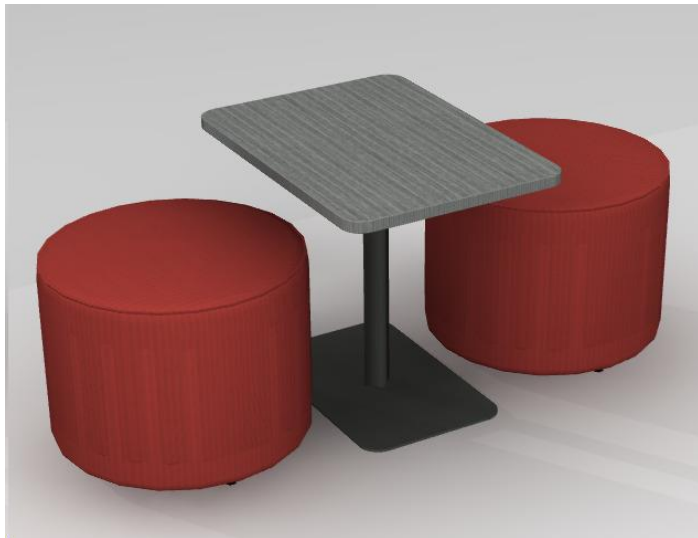
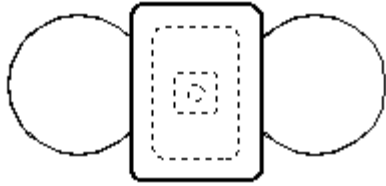


Paint  
Smith System  
Black  
Sit/Stand base

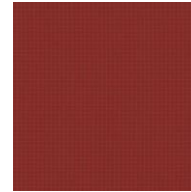
*Finishes shown may vary from different screens and printers*

## 09 | Classroom furniture – 9 classrooms

### Steelcase



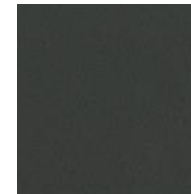
#### FINISHES



Upholstery  
Big Dot  
Cinnamon  
3525-301  
Alight Bench



Laminate  
Storm Wenge  
2HSW  
Simple table top



Paint  
Merle  
7360  
Simple table base

#### DETAILS

- (2) Alight Round Ottomans
  - Low profile glides
- (1) Turnstone Simple Table
  - 22"d x 30"w x 25.5"h

*Finishes shown may vary from different screens and printers*

# SCOTT RICE

◦WORK INSPIRED◦

## **WORK/LIFE CENTER**

14720 W 105th St  
Lenexa KS 66215

## **MANHATTAN**

1880 Kimball Ave Suite 280  
Manhattan KS 66502

## **SR COLLECTIVE**

2100 Central St  
Kansas City MO 64108

## **SPRINGFIELD**

2137 W Kingsley St Suite C  
Springfield MO 65807

**SCOTTRICE.COM**