



FSA Facilities Workplace Transformation Selection Guide

Visit the FSA Facilities Website [scottrice.com/FSA](https://www.scottrice.com/FSA)

For additional information contact Vincent Horst
VincentH@scottrice.com
913-227-7765

SCOTT RICE
◦ OFFICE WORKS ◦

Work / Life Center
14720 West 105th St.
Lenexa, KS 66215

PROJECT PROCESS:

Step 1: Use this Selections Guide to view Typical, Seating, Conference Room, Add Ons, and Finishes. Or visit www.scottrice.com/FSA and click on the icons to view the options.

Step 2: Download the “Registration and Selection Form” from www.scottrice.com/FSA.

Step 3: Complete the selection form and email to vincenth@scottrice.com. If you have a building drawing please attach it to your email as well.

Step 4: We will review your selection form and provide drawings of your selections including your selected finishes. The drawing will be emailed to you for your review and approval.

Step 5: After you have approved the drawings, we’ll send back the Registration and Selection Form with all costs including freight, delivery and installation.

Step 6: Review and approve the final budget amount. Sign the Registration and Selection Form and email to vincenth@scottrice.com.

Step 7: We will place the order and coordinate delivery and installation with you.

Step 8: After installation, please sign the Registration and Selection Form under “Delivery and Installation Complete”. Please email to michalw@scottrice.com.

TYPICALS

- Private Offices
- Workstations
- Seating
- Conferencing

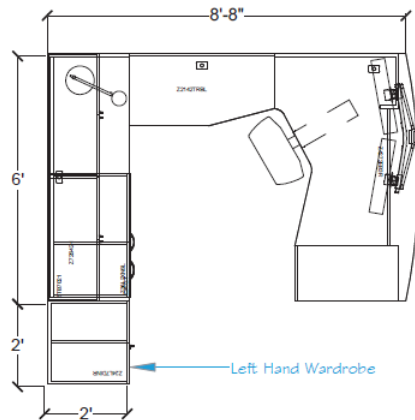
TYPICALS

PRIVATE OFFICE | PO1

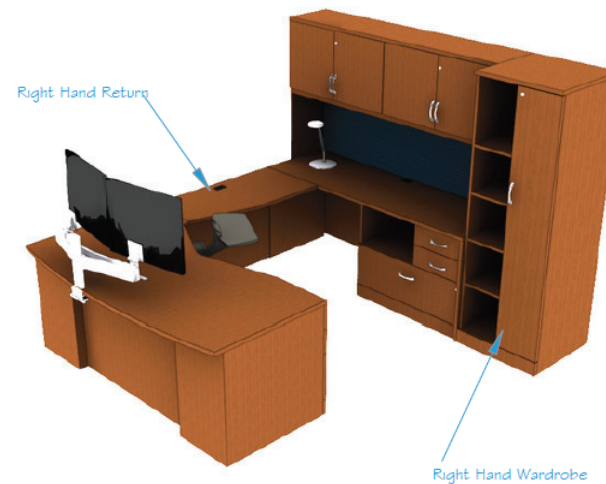
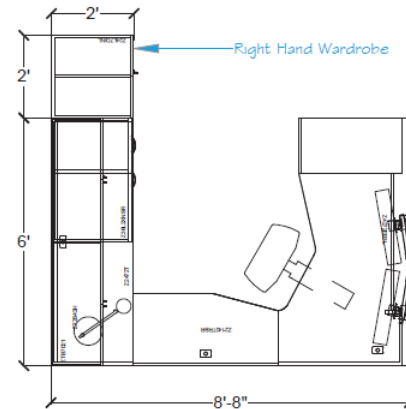
\$4,436

INCLUDES TASK LIGHT, KEYBOARD TRAY, & DUAL MONITOR ARM

Left Hand Layout



Right Hand Layout



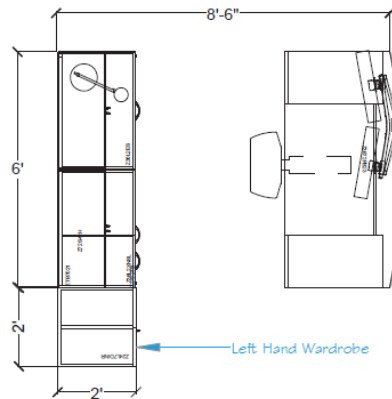
TYPICALS

\$4,856

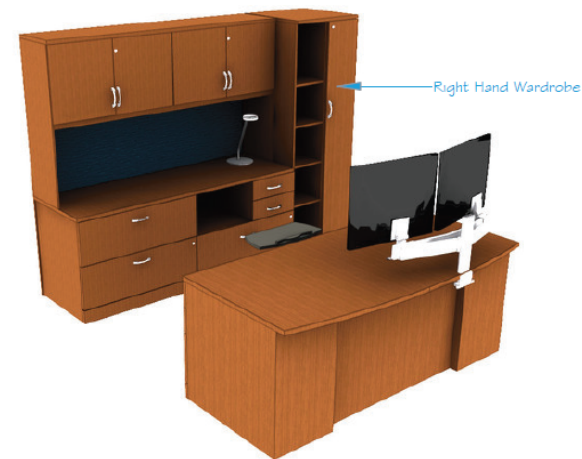
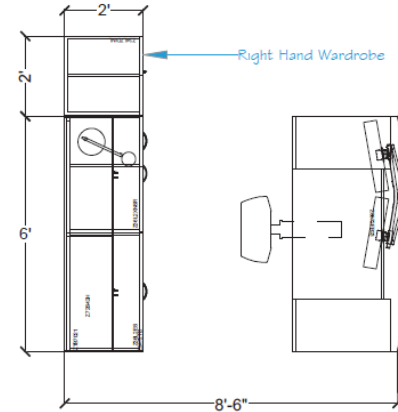
PRIVATE OFFICE | PT1

INCLUDES TASK LIGHT, KEYBOARD TRAY, & DUAL MONITOR ARM

Left Hand Layout



Right Hand Layout

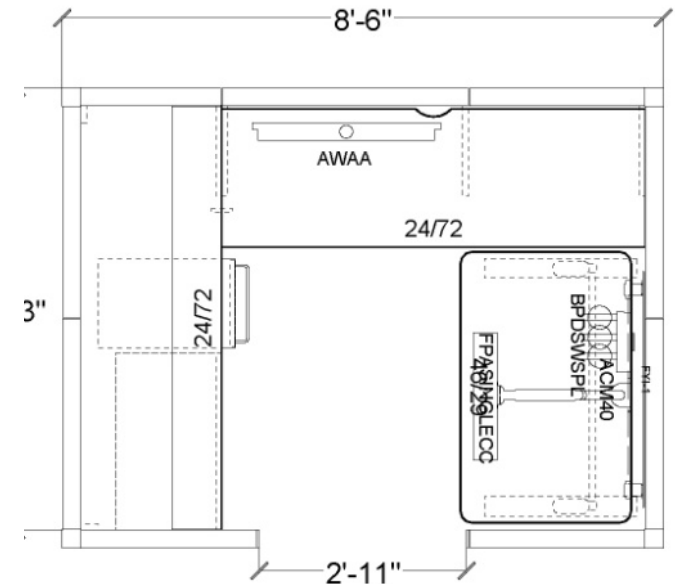
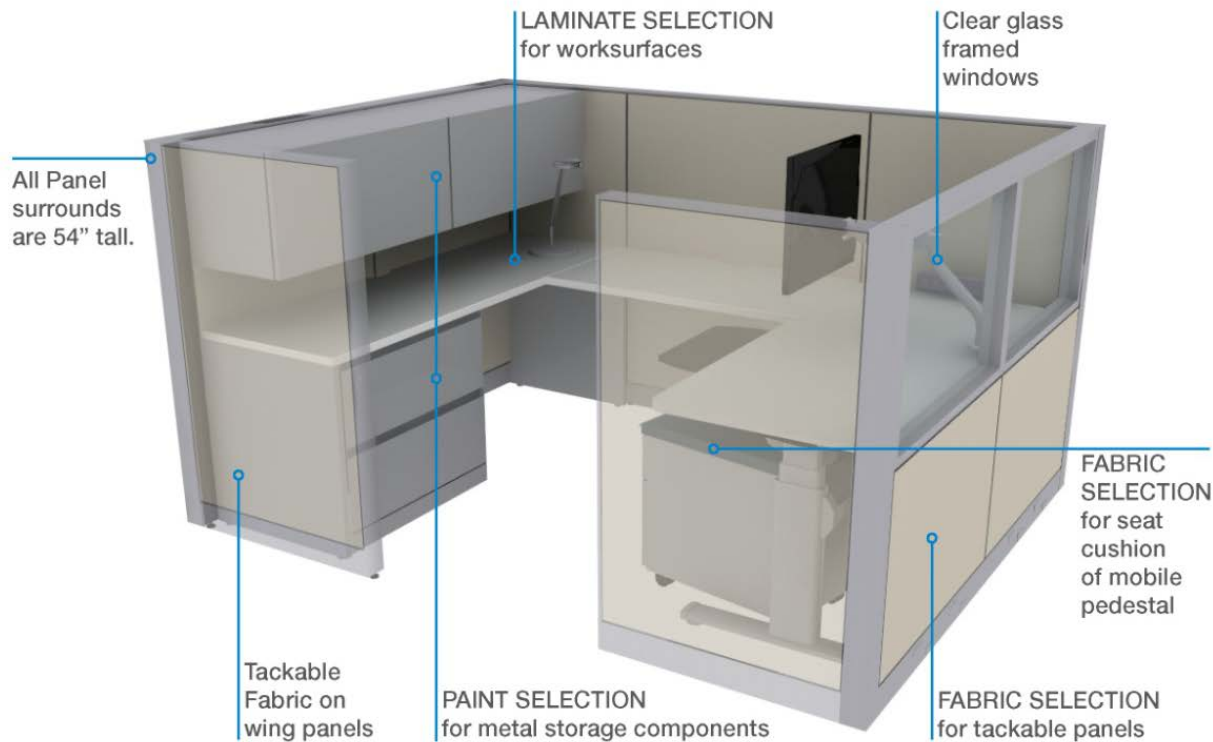


TYPICALS

WORKSTATION | WS1

INCLUDES TASK LIGHT, KEYBOARD TRAY, MOBILE PEDESTAL & DUAL MONITOR ARM

\$7,923

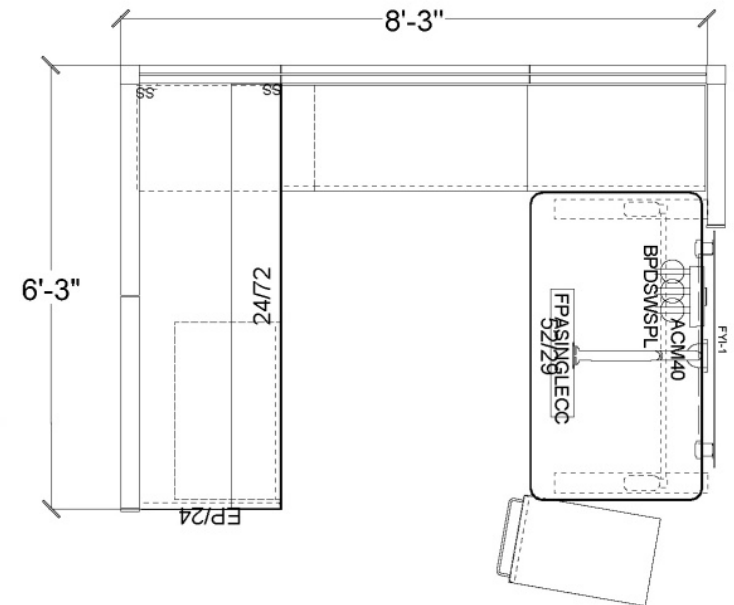
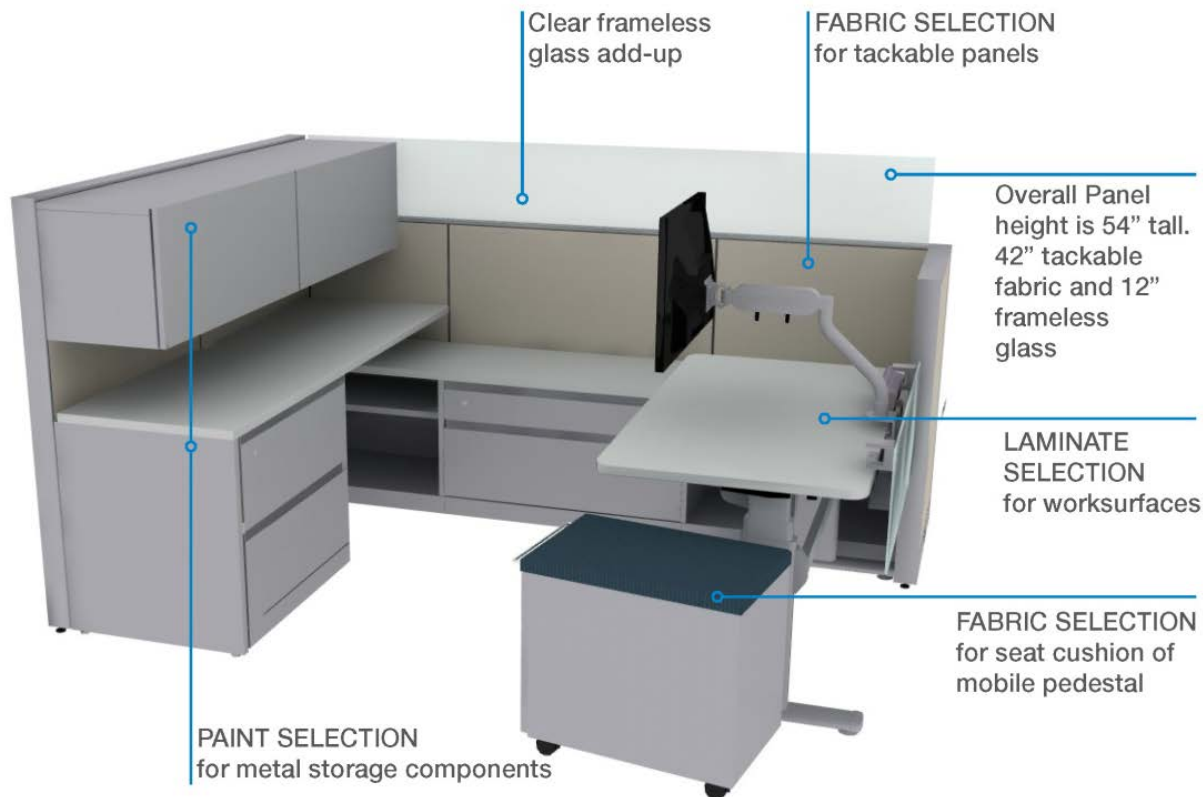


TYPICALS

WORKSTATION | WS2

INCLUDES TASK LIGHT, KEYBOARD TRAY, MOBILE PEDESTAL, & DUAL MONITOR ARM

\$8,372

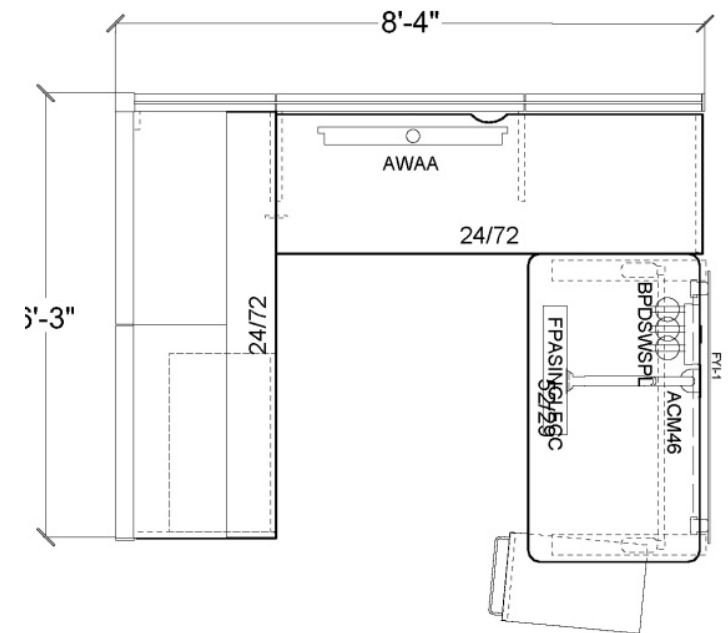
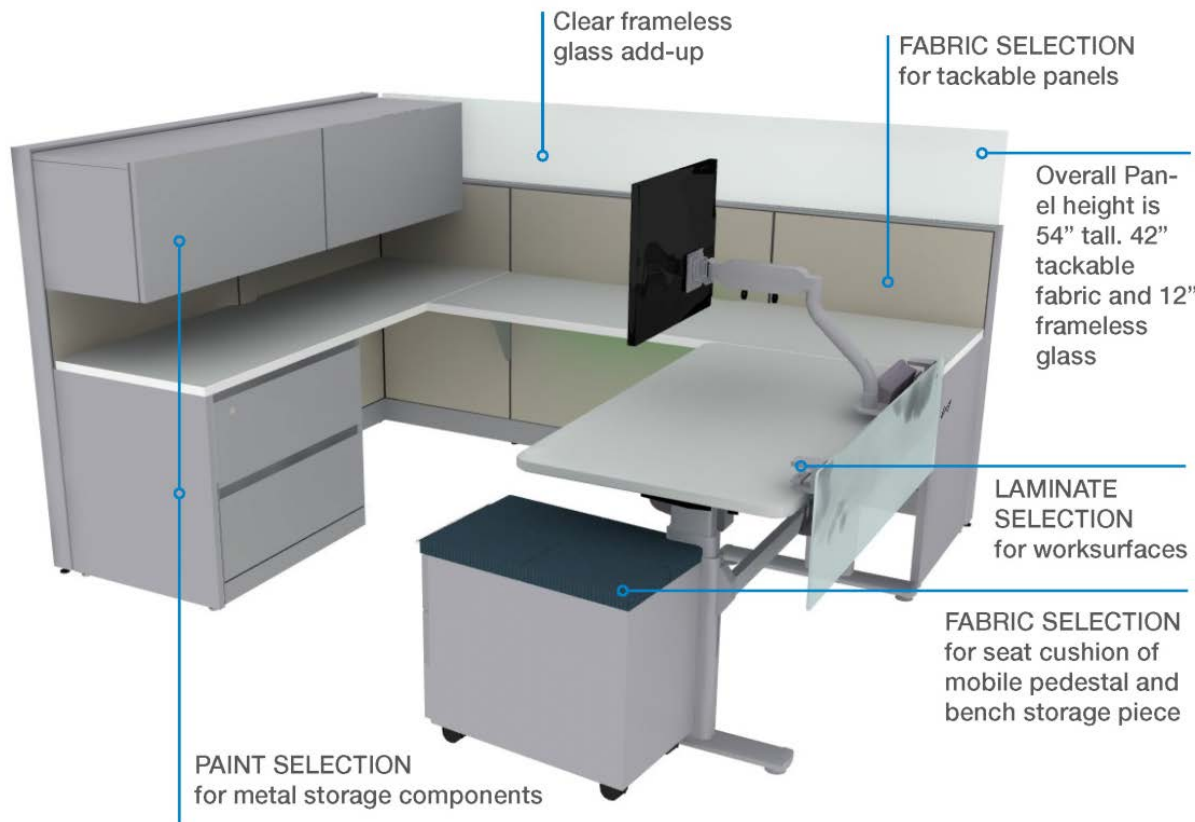


TYPICALS

WORKSTATION | WS3

INCLUDES TASK LIGHT, KEYBOARD TRAY, MOBILE PEDESTAL, & DUAL MONITOR ARM

\$6,846

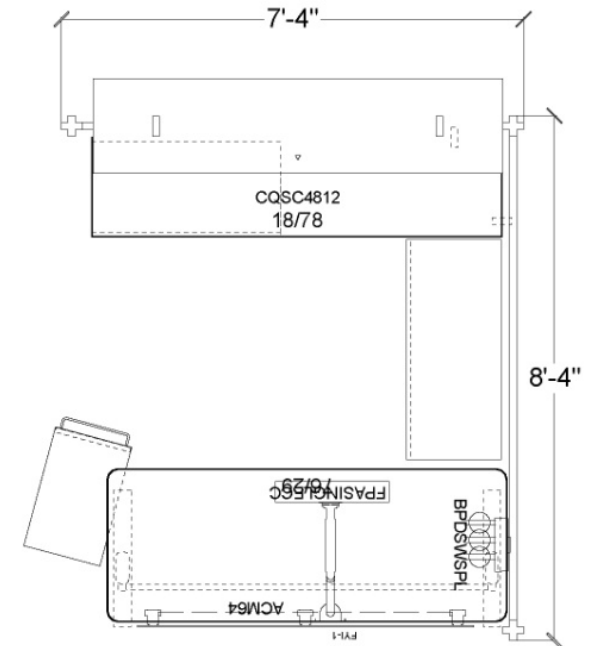
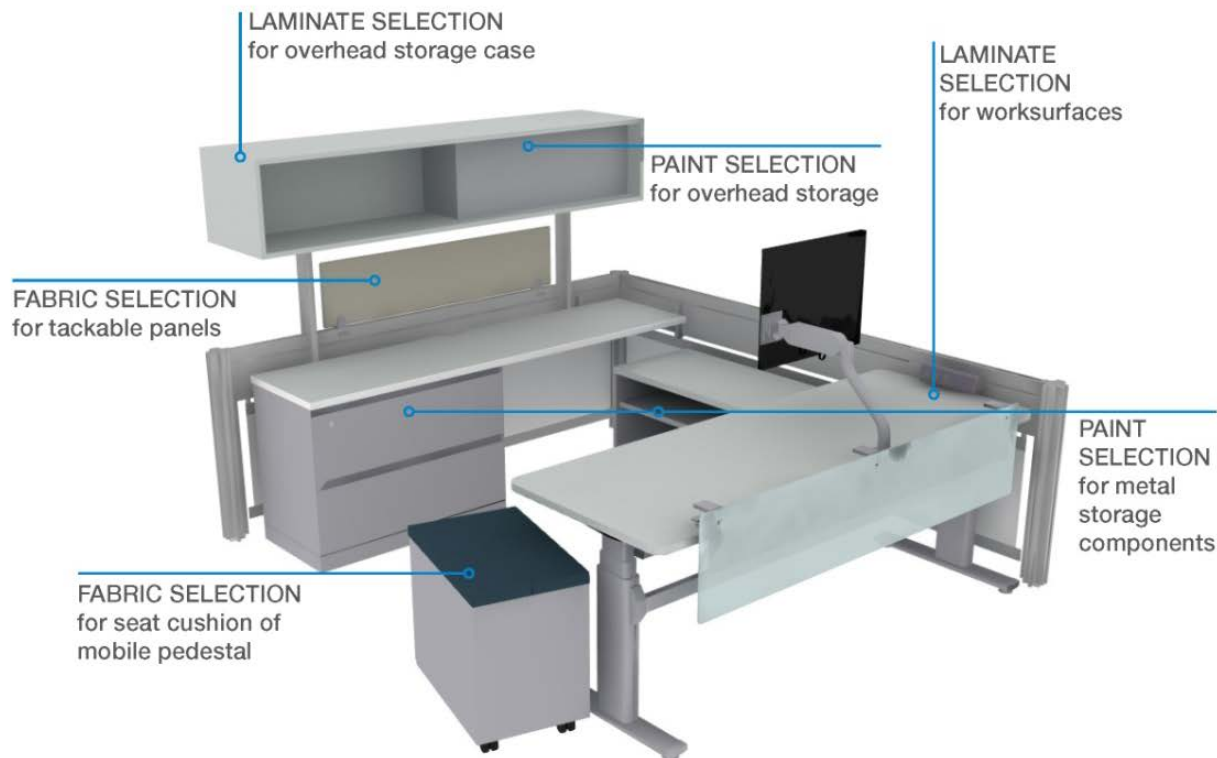


TYPICALS

WORKSTATION | WS4

INCLUDES TASK LIGHT, KEYBOARD TRAY, MOBILE PEDESTAL, & DUAL MONITOR ARM

\$7,662



TYPICALS

SEATING | C1

\$419



Note – Finishes pictured may vary from item specified

Features:

- Mid –back mesh, medium seat
- Swivel Tilt Control
- Full Function Arms – Height/Width/Pivot Adjustable
- Seat Depth Adjustment
- 275 – 300lb weight capacity
- Black Base
- Black Mesh Back

TYPICALS

SEATING | C2

\$400



Note – Finishes pictured may vary from item specified

Features:

- Mid-Back with Adjustable Lumbar Support
- Black Frame, Base
- Multi-Adjustable Height and Width Arms
- Adjustable Seat Depth
- Aerodynamic Design
- 300 lb. Weight Capacity
- Black Mesh Back

TYPICALS

SEATING | C3

\$477



Note – Finishes pictured may vary from item specified

Features:

- Mid-Back with Adjustable Lumbar Support
- Enhanced Synchro Tilt
- Multi-Adjustable Height and Width Arms
- Waterfall Seat
- Adjustable Seat Depth
- Silver Frame
- Black Mesh Back

TYPICALS

SEATING | C4

\$293



Note – Finishes pictured may vary from item specified

Features:

- Thin Profile High-Back and Mid-Back Design
- 500 lb. Weight Capacity
- Full Seat Pan for Easy Stacking
- Black Frame
- Upholstered seat and back

TYPICALS

SEATING | C5

\$248



Note – Finishes pictured may vary from item specified

Features:

- Ergonomic Back Support and Comfort
- 300 lb. Weight Capacity
- Silver Frame
- Black Polyurethane Arms
- Black Mesh Back

TYPICALS

SEATING | C6

\$240



Note – Finishes pictured may vary from item specified

Features:

- Ergonomic Back Support and Comfort
- 300 lb. Weight Capacity
- Silver Frame
- Black Mesh Back

TYPICALS

SEATING | C7

\$254



Note – Finishes pictured may vary from item specified

Features:

- Thin Profile High-Back and Mid-Back Design
- 500 lb. Weight Capacity
- Full Seat Pan for Easy Stacking
- Black Frame

TYPICALS

CONFERENCE TABLES | CT



	<i>Price</i>	<i>Length</i>	<i>Seats</i>
CT6	\$4,815	6'	4-6 people
CT8	\$6,187	8'	6-8 people
CT10	\$7,733	10'	8-10 people
CT12	\$9,328	12'	10-12 people
CT16	\$12,437	16'	14-16 people

Features:

- 1 1/2 " thick rectangular laminate top
- Available in 5 lengths.

TYPICALS

CONFERENCE SEATING | CS1

\$679



Features:

- Classic tuxedo styling
- Split back construction offers syncro movement
- 200 – 350lb weight capacity
- **May also use C1-C6**

TYPICALS

CONFERENCE SEATING | CS2

\$382



Features:

- Plush foam back
- Double stitch detailing
- Black base and arms
- Swivel tilt mechanism
- Waterfall Seat
- 300lb weight capacity
- **May also use C1-C6**

ADD - ONS

- Task Light
- Keyboard Tray
- Dual Monitor Arm
- Power & Data
- Pencil Drawers
- CPU Holder
- Lateral Files
- Mobile Pedestals

ADD-ON

TASK LIGHT | TL1

\$237



Features:

- LED task light
- Built in smart dimmer
- Clamp mount and table top base included
- Flexible: adjust the light to where needed

ADD-ON

KEY BOARD TRAY | KBHT

\$215



Features:

- Direct Mount, Trackless Keyboard Tray
- Enhanced patented Lift-N-Lock braking mechanism
- Soft Touch Knob Dial Tilt with +10° to -15° tilt angles
- 360° of swivel

ADD-ON

DUAL MONITOR ARM | M1

\$365



Features:

- Fast, simple assembly
- Easy to adjust with an Allen wrench
- Arm swivels 360 degrees around the base

ADD-ON

DESKTOP POWER & DATA | PD1

\$134



Features:

- Easily mounts to tables, desks, and work surfaces
- Unique swiveling 6' power cord adapts to each application
- 2 power receptacles and 2 open data outlets

ADD-ON

LARGE PENCIL DRAWER | D1

\$88



Features:

- Pencil & Paper Drawer with ball bearing slides
- 22-3/4"W x 20-55/34"D

ADD-ON

SMALL PENCIL DRAWER | D2

\$77



Features:

- Pencil & Paper Drawer with ball bearing slides
- 15"W x 18"D
- Track is 26" long

ADD-ON

WIRELESS CHARGER DRAWER | D3

\$106



Features:

- Under-Desk mounting storage drawer with wireless charge pad for devices with Qi enabled direct charging
- Includes 2 integrated USB Ports
- 320mmL x 220mmW x 48mmH

ADD-ON

SLIDE & SWIVEL CPU HOLDER| CPU

\$140



Features:

- Easy-reach sliding and swiveling CPU holder
- Adjustable CPU bracket
- Soft touch knob with key locking system
- 360 degree swivel range
- 85lb weight capacity
- Width, length, and height adjustable
- Adjustable width from 3.5" – 9.3"
- Height adjustable from 13.5" – 22.5"
- Track length 17"

ADD-ON

36"W LAMINATE LATERAL FILE | L1

\$1,276



Features:

- Free-standing lateral file
- 36" Wide
- 4 pull out drawers and 1 open shelf
- Woodgrain Laminate
- Finished back
- Leveling glides
- Key alike or differently

ADD-ON

36"W STEEL LATERAL FILE | L2

\$1,158



Features:

- Free-standing lateral file
- 36" Wide
- 1 lift up door / fixed shelf, 4 pull out drawers
- Steel construction
- Finished back
- Leveling glides
- 1" high steel top
- Key alike or differently

ADD-ON

42"W STEEL LATERAL FILE | L3

\$1,302



Features:

- Free-standing lateral file
- 42" Wide
- 1 lift up door / fixed shelf, 4 pull out drawers
- Steel construction
- Finished back
- Leveling glides
- 1" high steel top
- Key alike or differently

ADD-ON

MOBILE PEDESTAL | MP1

\$694



Note – Finishes pictured may vary from item specified

Features:

- Fits under a worksurface and can be moved wherever storage is needed.
- Provides an auxiliary surface.
- Cushion top provides a temporary seat for informal gatherings.
- One box drawer, one file drawer.
- Drawers open their full depth for total access to contents.
- One divider is included for each box drawer.
- File drawer accommodates front-to-back filing of letter-size hanging file folders.
- Hard composition, non-locking casters with a full-rotation swivel.

VIEW AND SELECT FINISHES

FINISHES

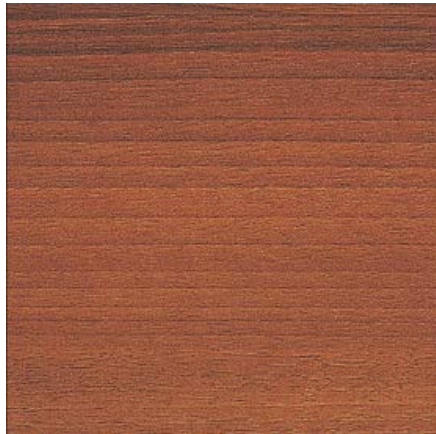
LAMINATE OPTIONS

FOR PRIVATE OFFICES, CONFERENCE TABLES, & LAMINATE LATERAL FILES

Select One for items PO1, PT1, CT, L1



Asian Night



Avant Honey

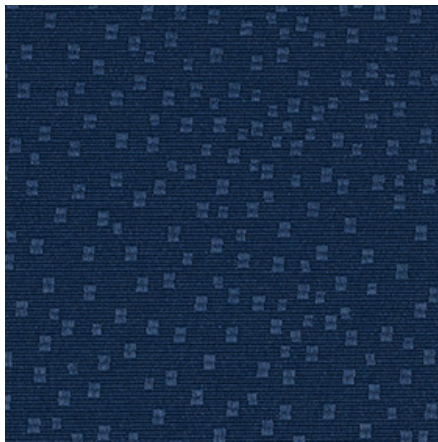


Tiger Walnut

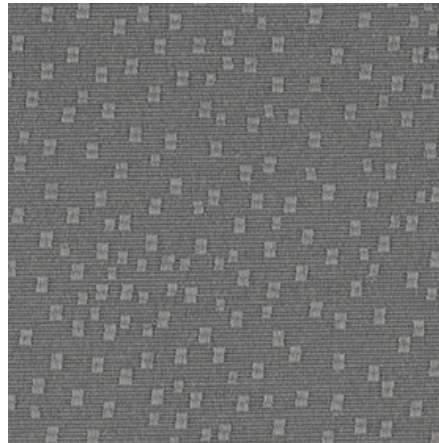
FINISHES

TACK BOARD FABRIC OPTIONS FOR PRIVATE OFFICES

Select One for items PO1, PT1



Match/Wave



Match/Grey



Match/Desert

FINISHES

LAMINATE OPTIONS

FOR WORKSTATIONS

Select One for items WS1 – WS4



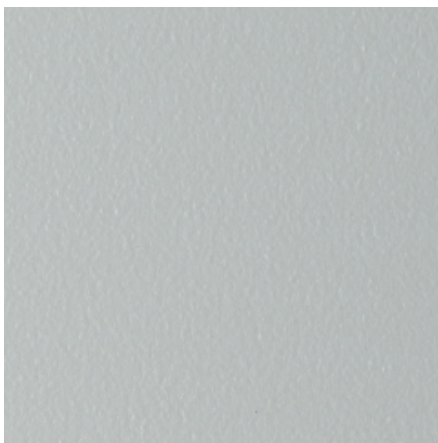
Graphite Walnut



Medium Cherry



Dune



Seagull

FINISHES

PAINT OPTIONS

FOR WORKSTATIONS, STEEL LATERAL FILES, AND MOBILE PEDESTALS

Select One for items WS1-WS4, L2, L3, MP1



Platinum Metallic



Mineral Metallic

FINISHES

PANEL FABRIC OPTIONS FOR WORKSTATIONS

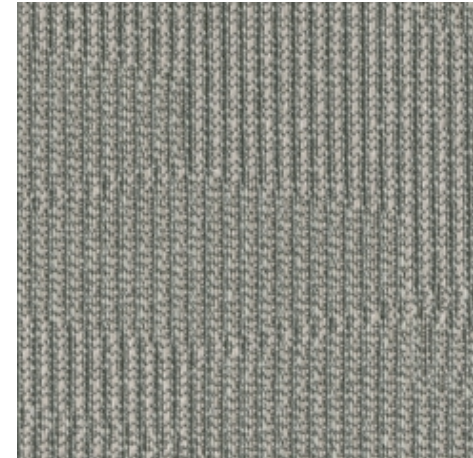
Select One for items WS1 – WS4



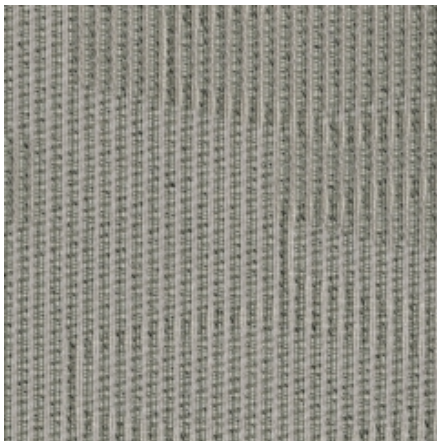
Alloy/Asti



Alloy/Element



Tex Hex/Briquelette



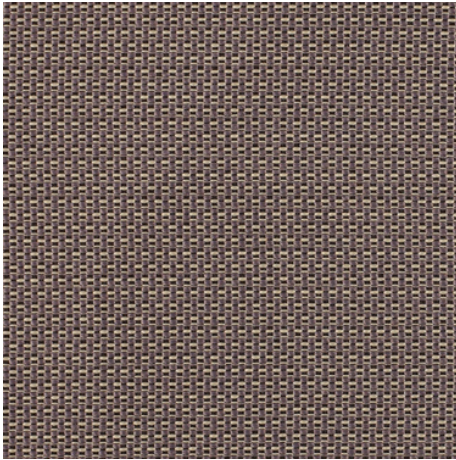
Tex Hex/Papyrus

FINISHES

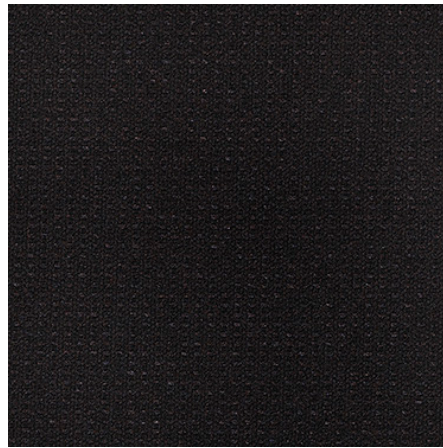
SEATING FABRIC OPTIONS

FOR TASK, GUEST, AND CONFERENCE CHAIRS

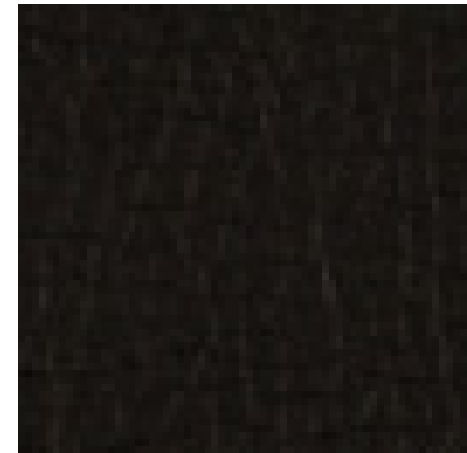
Select One for items C1-C7, CS1-CS2



Epic/Granite



Millennium/Onyx



Canter/Onyx
Faux Leather



Fuse/Pepper

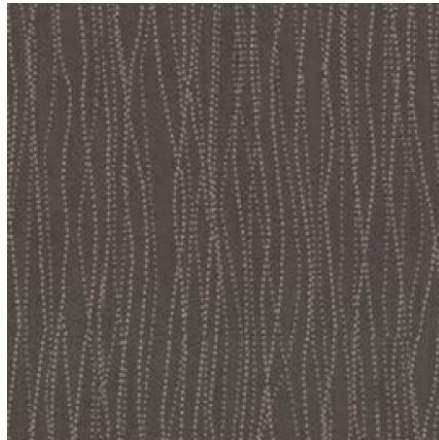
FINISHES

SEAT CUSHION FABRIC OPTIONS FOR MOBILE PEDESTALS

Select One for item MP1



Velocity/Ink



Velocity/Stone



Velocity/Silver Streak